

WOOD STOVES

NEO SERIES

CATALYTIC-FREE | EPA2020 CERTIFIED

**PACIFIC
ENERGY**

FEATURING
LE2
PRODUCTS

NEO SERIES

FREESTANDING WOOD STOVES



The Neo LE2 wood stove makes a bold statement with its tall profile for easy loading, line-of-sight view of the flame, and modern design. Like its larger cousin the Neo 2.5 LE2, the Neo 1.6 LE2 is a true heating machine with Pacific Energy's solid steel construction and floating firebox with stainless steel baffle. Choose the color that is right for your home with side panels available in a variety of porcelain enamel colors.

NEO 1.6 LE2 – SUNSET RED



NEO 1.6 LE2 – IVORY



NEO 2.5 LE2 – STAINLESS STEEL

**EPA2020
CERTIFIED**



All Pacific Energy Wood Stoves come standard with these industry leading features:

- EPA 2020 Certified
- Reliable, durable, catalytic-free technology
- High capacity baffle system
- Multi-port combustion air injection system
- Air wash system for super clean ceramic glass
- Inside and outside combustion air capable
- Floating firebox for extended stove life
- Single-Lever Air Control
- Mobile Home Approved



BUILD YOUR STOVE
pacificenergy.net/product-builder



NEO 1.6 LE2 – METALLIC BLACK

NEO 1.6 LE2

For spaces up to 1500 sq. ft.

Heat Output Cord Wood

54,000 BTU

30,150 BTU EPA Test Fuel

Efficiency (HHV)	75.4%
Emissions	1.6 gm/hr.
Log Size (recommended)	16"
Log Size (max)	18"
Firebox Size	1.4 cu.ft.
Viewing Area	152 sq.in.
Max Burn Time (Approx)	7-10 Hours ¹

NEO 1.6 LE2

STANDARD FEATURES

ACMS (Advanced Combustion Management System)
Easy to use ash disposal system
Rich Metallic Black finish
Heavy plate-steel top
304 Stainless Steel Baffle, Tubes, Rails and Flame Shield
Knife edge door seal
Boost air for easy lighting
Mobile home approved
Leveling Legs
Integrated Heat Exchanger
East-West fuel loading

DESIGN OPTIONS

Side panels in painted Metallic Black Steel, Stainless Steel, or a choice of three lustrous Porcelain Enamel colors

PERFORMANCE OPTIONS

Temperature-Actuated Variable-Speed Blower



NEO 2.5 LE2 – EBONY PORCELAIN

NEO 2.5 LE2

For spaces up to 2000 sq. ft.

Heat Output Cord Wood

85,000 BTU

60,000 BTU EPA Test Fuel

Efficiency (HHV)	73%
Emissions	1.6 gm/hr.
Log Size (recommended)	17"
Log Size (max)	18"
Firebox Size	1.9 cu.ft.
Viewing Area	184 sq.in.
Max Burn Time (Approx)	8-12 Hours ¹

NEO 2.5 LE2

STANDARD FEATURES

ACMS (Advanced Combustion Management System)
Easy to use ash disposal system
Rich Metallic Black finish
Heavy plate-steel top
304 Stainless Steel Baffle, Tubes, Rails and Flame Shield
Knife edge door seal
Boost air for easy lighting
Mobile home approved
Leveling Legs
Integrated Heat Exchanger
East-West fuel loading
Removable cast iron trivet over cooking surface

DESIGN OPTIONS

Side panels in painted Metallic Black Steel, Stainless Steel, or a choice of three lustrous Porcelain Enamel colors

PERFORMANCE OPTIONS

Temperature-Actuated Variable-Speed Blower



DESIGN-A-STOVE

STEEL OPTIONS

The Neo 1.6 LE2 + 2.5 LE2 sidepanels are available in two steel finishes, painted steel or stainless steel.



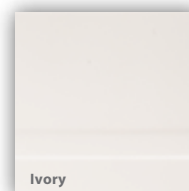
Metallic Black



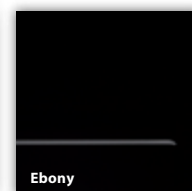
Stainless Steel

PORCELAIN ENAMEL OPTIONS

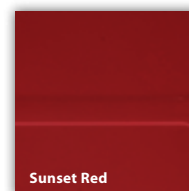
The Neo 1.6 LE2 + 2.5 LE2 sidepanels are available in three porcelain enamel colors. Optional colors are available, please see dealer or pacificenergy.net for more details.



Ivory



Ebony



Sunset Red

¹ Burn times depend on draft, fuel, loading, and user input.



BAFFLE SYSTEM

Pacific Energy leads the industry in premium clean burn technology. Our unique high capacity baffle system preheats secondary combustion air for an extremely effective reburn. By burning the combustible elements in the air, we improve our stove's environmental performance while significantly reducing the amount of wood consumed.



Pacific Energy's Extended Burn Technologies

PERFORMANCE EFFICIENCY	BURN TIME		
	Combustion Air	Fuel Quality	Draft
			no EBT or ACMS
			EBT2
			ACMS

ACMS

The Advanced Combustion Management System (ACMS) is the next evolution of EBT. It further improves burn times, efficiency, and emissions by intelligently fine tuning combustion air.

EBT2

The second generation of Extended Burn Technology, the EBT2 is field proven to be highly effective at controlling the secondary burn system, extending burn times and reducing overall emissions.

Pacific Energy Secondary Combustion System

Pacific Energy's legendary secondary combustion system returns the smoke from the primary fire making one of the cleanest, most reliable and maintenance free systems available. High quality stainless steel makes sure that you have years of trouble-free use. There is no bypass or catalytic combustors.



SELF SEALING ASH DUMP SYSTEM

Our self-sealing ash dump system, with its spring-loaded trap door provides a time saving, hassle-free ash removal solution that, frankly, has yet to be equaled. Pacific Energy's machined steel, spring loaded ash removal system is opened from outside the stove and closes automatically for safety and convenience when you're done.



KNIFE EDGE DOOR SEAL

A formed and welded knife edge opening creates a superior air-tight seal to the door gasket while strengthening the stove face.



FLOATING FIREBOX

All fireboxes are subjected to wild extremes of temperatures. Solidly designed with steel brick support rails, our legendary floating system allows key parts to freely expand and contract to drastically reduce metal fatigue and add years of life to the entire appliance. The high capacity stainless steel baffle (part of the clean-burning secondary combustion system) and the flame shield (which protects the stove top from intense heat) are integral components of our legendary floating firebox system.



AIR WASH

Pacific Energy developed the first effective air wash manifold systems, a design that flows pre-heated air to the glass surface to keep it clean. A refined design now creates a high-pressure zone in the center and forces air to flow from above and across the glass. Even at low air settings, we are confident that our air wash system is the most effective available. And that our glass doors are among the cleanest in the industry.



@pacificenergyfireplaceproducts

Follow us on Facebook and Instagram for news, promotions, and inspiring installations.



BUILD YOUR STOVE
pacificenergy.net/product-builder



NEO 2.5 LE2 – SUNSET RED

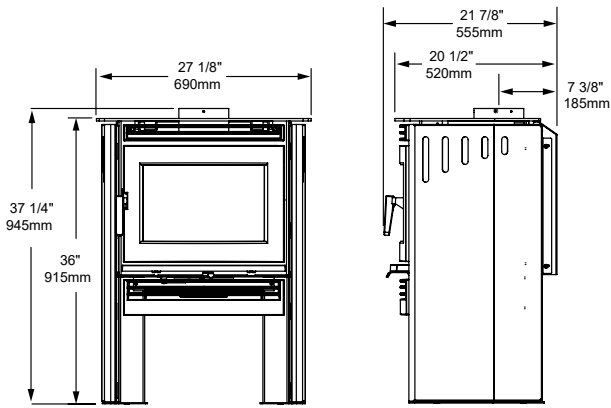


NEO 1.6 LE2 – METALLIC BLACK

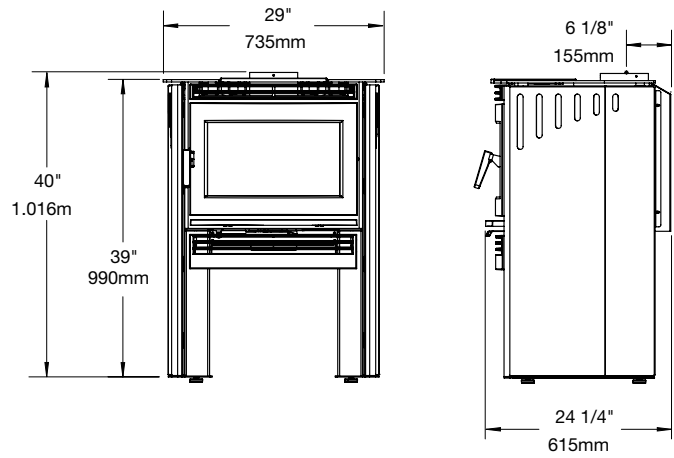


NEO 2.5 LE2 – STAINLESS STEEL

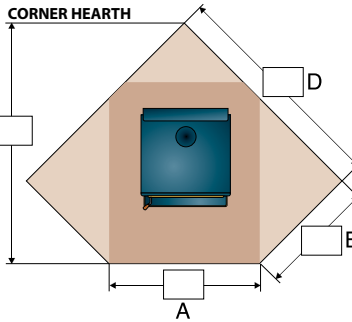
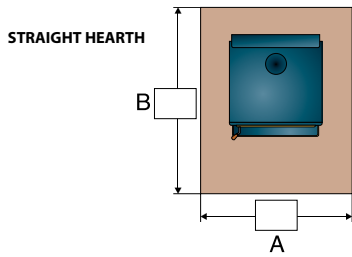
NEO 1.6 LE2



NEO 2.5 LE2



MINIMUM FLOOR PROTECTOR DIMENSIONS



CANADA

	NEO 1.6 LE2					NEO 2.5 LE2				
	A	B	C	D	E	A	B	C	D	E
Minimum (Not extended to back wall)	43"	45"	-	-	-	45"	49"	-	-	-
Residential, single wall, vertical connector	43"	47"	58"	56"	25 5/8"	45"	53"	64"	61 1/4"	29 3/8"
Residential, double wall, vertical connector	43"	45"	55"	54"	23 5/8"	45"	46"	57"	56 1/4"	24 3/8"
Alcove, double wall, connector	43"	45"	-	-	-	45"	46"	-	-	-
Mobile home	43"	45"	55"	54"	23 5/8"	45"	46"	57"	56 1/4"	24 3/8"

USA

	NEO 1.6 LE2					NEO 2.5 LE2				
	A	B	C	D	E	A	B	C	D	E
Minimum (Not extended to back wall)	33"	34"	-	-	-	35"	37 3/4"	-	-	-
Residential, single wall, vertical connector	33"	45"	56"	51"	27 5/8"	35"	49 3/4"	60 3/4"	55 3/8"	30 5/8"
Residential, double wall, vertical connector	33"	43"	53"	49"	25 5/8"	35"	42 3/4"	53 3/4"	50 3/8"	25 5/8"
Alcove, double wall, connector	33"	43"	-	-	-	35"	42 3/4"	-	-	-
Mobile home	33"	43"	53"	49"	25 5/8"	35"	42 3/4"	53 3/4"	51 3/8"	28 3/8"

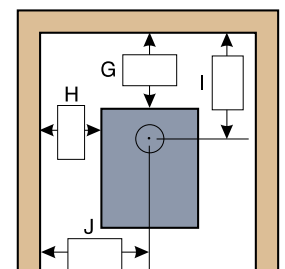
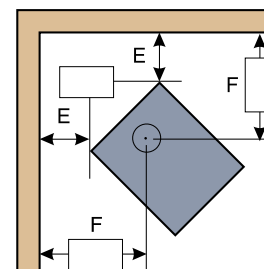
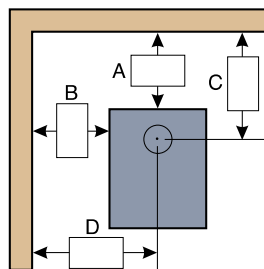
MINIMUM CLEARANCES TO COMBUSTIBLES

		From top of stove to ceiling	STRAIGHT (VERTICAL CONNECTOR)				CORNER		ALCOVE			
			A	B	C	D	E	F	G	H	I	J
RESIDENTIAL SINGLE WALL CONNECTOR	NEO 1.6 LE2	48"	10"	10"	17 3/8"	23 1/2"	7"	20"	10"	10"	17 3/8"	23 1/2"
	NEO 2.5 LE2	44"	12"	12"	18"	26 1/2"	8"	20 5/8"	N/A	N/A	N/A	N/A
RESIDENTIAL DOUBLE WALL CONNECTOR	NEO 1.6 LE2	48"	8"	8"	15 3/8"	21 1/2"	5"	18"	8"	8"	15 3/8"	21 1/2"
	NEO 2.5 LE2	44"	5"	8"	11"	22 1/2"	3"	15 5/8"	5"	8"	11"	22 1/2"
MOBILE HOME DOUBLE WALL CONNECTOR	NEO 1.6 LE2	48"	8"	8"	15 3/8"	22"	5"	18"	8"	8"	15 3/8"	22"
	NEO 2.5 LE2	56"	5"	8"	11"	22 1/2"	3"	15 5/8"	5"	8"	11"	22 1/2"

For reference only. Installations should be based on manuals and rating labels.



Pacific Energy is committed to continuous product improvement and innovation. As a result, appearance and specifications of the products featured in this brochure are subject to change without notice. For more information, please visit pacificenergy.net



STRAIGHT

CORNER

ALCOVE